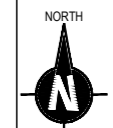
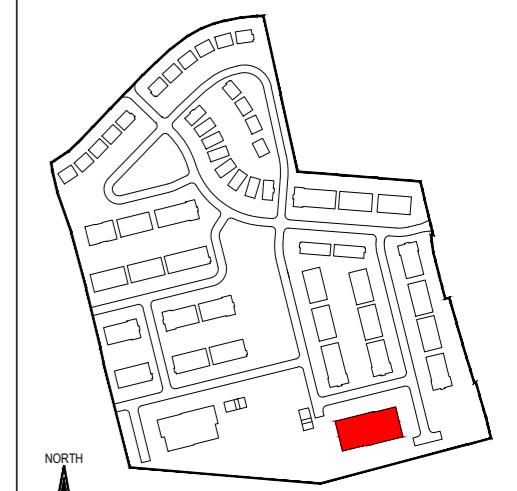


**COPYRIGHT**  
THIS DOCUMENT AND ALL DATA CONTAINED HEREIN REMAIN THE PROPERTY OF O'DALY ARCHITECTS. IT IS SUPPLIED IN CONFIDENCE FOR EVALUATION PURPOSES ONLY UNDER THE CONDITION THAT SAME IS NOT USED, REPRODUCED OR TRANSMITTED IN ANY WAY TO OTHERS WITHOUT WRITTEN CONSENT.

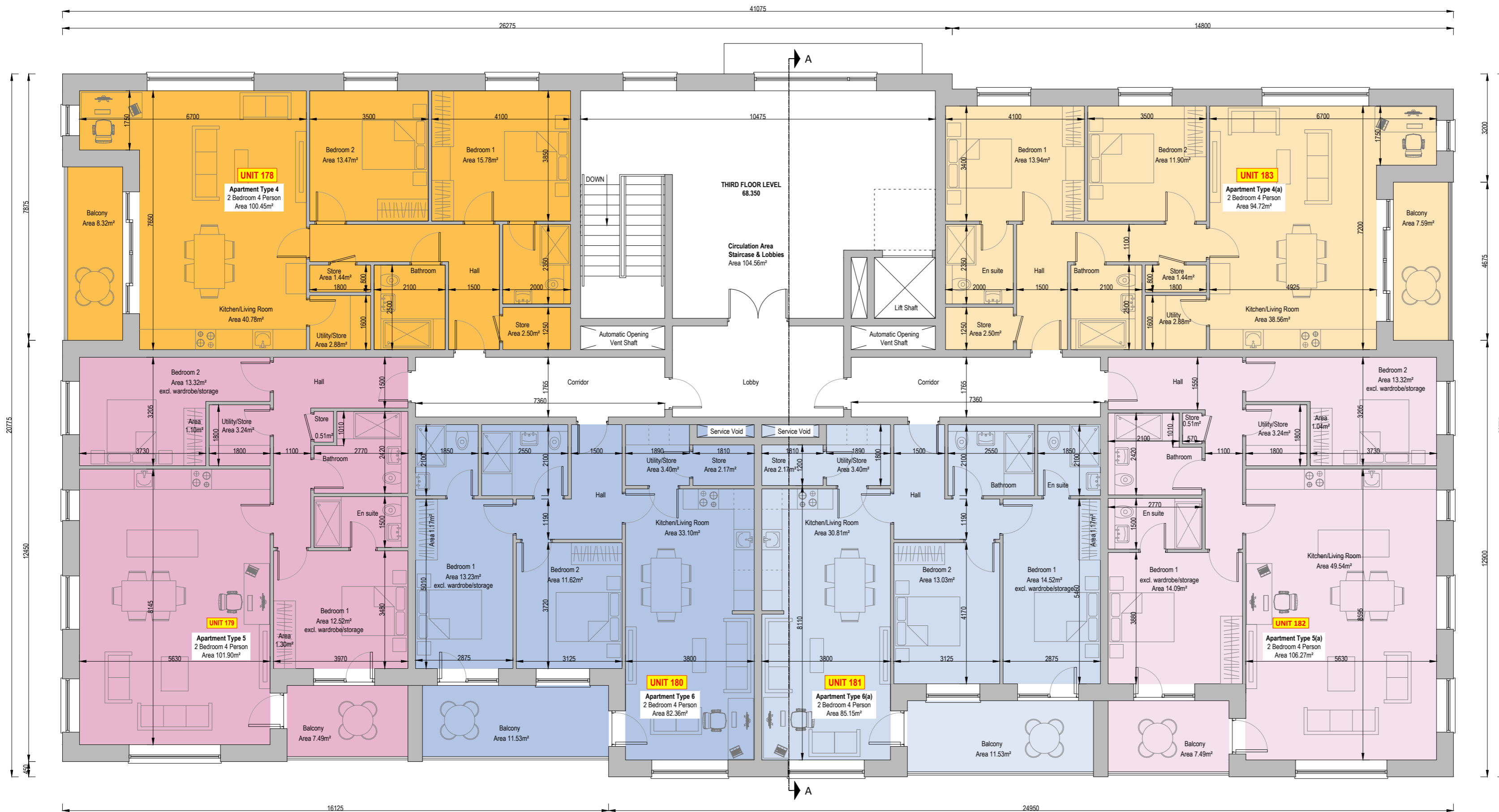
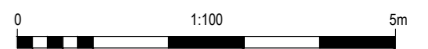
**DIMENSIONS**  
UNLESS OTHERWISE STATED, DIMENSIONS SHOWN ARE IN MILLIMETRES. NO DIMENSIONS TO BE SCALED FROM THIS DRAWING. ALL DIMENSIONS TO BE CHECKED BY THE CONTRACTOR ON SITE AND ANY DISCREPANCIES TO BE REPORTED TO THE ARCHITECT.



**Key Plan**  
Scale 1:5000

Taken from Planning Design Standards for Apartments (Guidelines for Planning Authorities)  
Appendix 1 - Minimum Floor Areas and Standards  
2 Bedroom 4 Person Apartment

	Required	Apartment Type 4	Apartment Type 4(a)	Apartment Type 5	Apartment Type 5(a)	Apartment Type 6	Apartment Type 6(a)
Gross Floor Area	73m <sup>2</sup>	100.45m <sup>2</sup>	94.72m <sup>2</sup>	101.90m <sup>2</sup>	106.27m <sup>2</sup>	82.36m <sup>2</sup>	85.15m <sup>2</sup>
Aggregate Bedroom Area (2 x 11.4m <sup>2</sup> )	23m <sup>2</sup>	29.25m <sup>2</sup>	25.84m <sup>2</sup>	25.84m <sup>2</sup>	27.41m <sup>2</sup>	24.85m <sup>2</sup>	27.55m <sup>2</sup>
Storage incl. wardrobes	6m <sup>2</sup>	6.82m <sup>2</sup>	6.82m <sup>2</sup>	6.15m <sup>2</sup>	6.09m <sup>2</sup>	6.74m <sup>2</sup>	6.74m <sup>2</sup>
Private amenity space	7m <sup>2</sup>	8.32m <sup>2</sup>	7.59m <sup>2</sup>	7.49m <sup>2</sup>	7.49m <sup>2</sup>	11.53m <sup>2</sup>	11.53m <sup>2</sup>



**THIRD FLOOR PLAN**  
Scale 1:100  
Total Floor Area 710.39m<sup>2</sup>  
Third Floor Includes Unit No.'s 179 - 184



**THIS DRAWING SHOULD BE READ IN CONJUNCTION WITH THE APARTMENT QUALITY ASSESSMENT SCHEDULE DOCUMENT REF. 24004-AR-AQA**



**o'daly architects**

1st Floor - Unit 13(B) - Mullaghboy Industrial Estate  
Navan - County Meath - Tel: (046) 9021283  
Mobile: (087) 0925233 - Email: ivan@odaly.ie



**Client:**  
Loughglenn Developments Ltd.

**Project Name and Address:**  
Proposed Large Residential Development (LRD) at  
"Crowpark 1st Division", Kildalkey Road, Trim, County Meath.

**Project Stage:**  
Planning

**Drawing Name:**  
Apartment Block B Third Floor Plan

**Drawn By:** iod **Scale:** 1:100 @ A2

**Checked By:** iod **Date:** 04.06.2026

**Drawing Number:** 24004-AR-313 **Revision:** P01